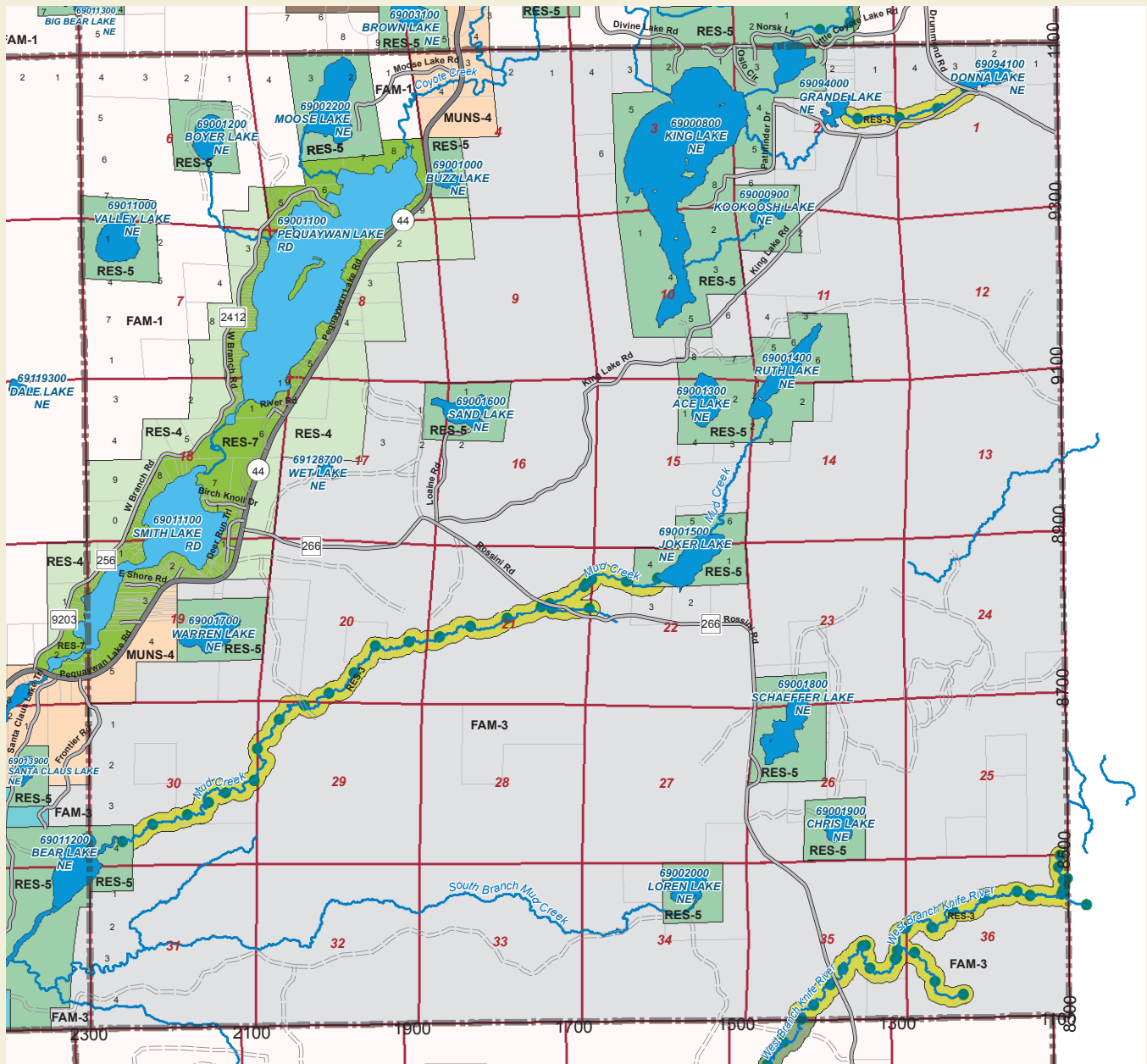


Pequawaywan 54-12



Zone Districts

- Forest Agricultural Management
 - Fam-1, 2, 3
- Residential
 - Res-1, 1a, 2, 3, 4, 5, 6, 7, 8, 9, 10, 11, 12
- Shoreland Mixed Use
 - Smu-1, 2, 3, 3a, 4, 4a, 5, 6, 7, 8, 9, 10, 11
- Multiple Use Non-Shoreland
 - Muns-2, 3, 4, 5, 7
- Sensitive Areas
 - Sens-1, 2, 3, 5
- Industrial
 - Ind-4
- Limited Industrial
 - Liu-1, 4, 5, 10, 11
- Non-Shoreland Commercial
 - Com-4, 6, 7, 11
- Lake Superior Overlay
 - Lso-10

River Classification & Setbacks

- Tributaries 100 ft.
- Primitive 300 ft.
- SLC Remote 200 ft.
- Recreational 150 ft.
- Rural / Agricultural 200 ft.
- Urban 100 ft.
- Trout Streams 150 ft.
- DNR Remote 200 ft.
- DNR Forested 150 ft.

Lake Classification

- General Development - GD 75 ft.
- Recreational Development - RD 100 ft.
- Natural Environment - NE 150 ft.

Road Functional Classifications & Road Setbacks

- Arterials 110 ft.
- Collectors 85 ft.
- Local Roads 68 ft.
- Other Roads 68 ft.

Parcels

- Parcels

12/6/2013

Lands within 300 feet of rivers, shall have same dimensional standards as adjacent non-shoreland area. Except for St. Louis, Cloquet, Whiteface, and Vermilion rivers.

St. Louis County Board Resolution No. 64
Adopted February 17, 2009

St. Louis County Board Resolution No. 961
Adopted December 19, 1995.

This zoning map is effective on August 13, 2013. For any subsequent changes contact the St. Louis County Planning & Zoning Department.

